

WAVELENGTHS

American Chiropractic Registry of Radiologic Technologists

ACRRT

SUMMER 2011

PRESIDENT'S MESSAGE:

We trust your summer has been enjoyable!

Hopefully, this edition will provide some helpful hints for x-raying the pars region of the lumbar spine.

SPONDYLOLISTHESIS — is the pars intact?

In a typical chiropractic office, patients will commonly present with lower back pain associated with spondylolisthesis. The word spondylolisthesis comes from the Greek words “spondylos”, which means “vertebra” and listhesis, which means to “slip or slide”.

The purpose of this article is to emphasize the role of oblique views and an AP lumbosacral spot view in the detection of the subtle pars interarticularis defects. (literally the area between the articular processes)

TYPES OF SPONDYLOLISTHESIS

- **CONGENITAL** — present at birth — abnormal vertebra development.
- **ISTHMIC (pars defect)** — most likely due to stress fractures weakening the bone in the pars region due to excessive hyperextension.
- **DEGENERATIVE** — with ageing, the discs lose water content and allow slippage of one vertebra upon another. Most commonly occurs at L4.

Less common types:

- **TRAUMATIC** — due to an injury
- **PATHOLOGIC** — a vertebra weakened by a disease process
- **POST SURGICAL** — slippage becoming worse after spinal surgery.

IMAGES

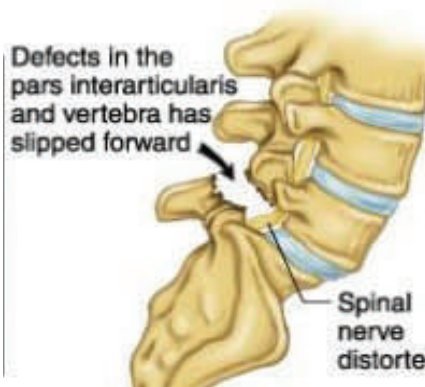


Fig 1.
Netter Diagram

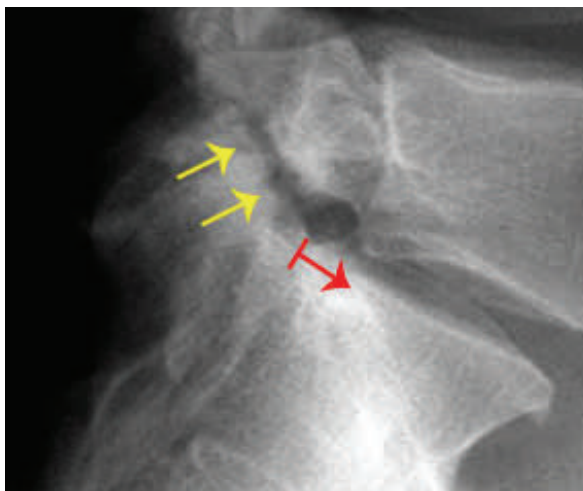


Fig 2.
Pars defect is noted (arrows) with anterior slippage of L5 vertebra on sacrum (arrow with base)

CHIROGEEK.COM 2005

What is new?

The “Digital Corner” is intended for offices using digital technology.

Please forward comments and suggestions to: fldacbr@gmail.com.

Study Guides Available

Study guides can be purchased for \$65.00 (including shipping and handling) through the ACRRT office.

Please send a check or money order to:

ACRRT
52 Colfax Street
Palatine, IL. 60067

Please call if you have any questions:

(847) 705.1178.

Inside this issue:

SPONDYLOLISTHESIS	1
STUDY GUIDE	2
RECERTIFICATION	2
DIGITAL CORNER	3
2011 MEMBERSHIP	3

WWW.ACRRT.COM

.... PARS INTACT?

If the physician is concerned about subtle pars defect, an AP spot view or oblique views are warranted to evaluate the pars region optimally.

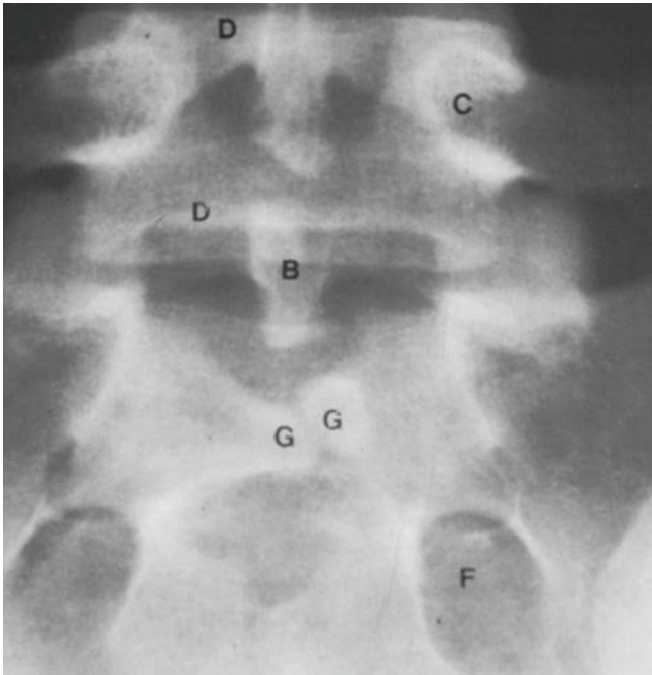


Fig 3.

AP LUMBOSARAL SPOT VIEW—central ray is directed between umbilicus and symphysis pubis with ~25 degrees cephalic tube tilt.

C = Pedicle of vertebra . Pars region is immediately below the pedicle on the AP radiograph.

Advantage: Single view will show both pars—less radiation exposure to patient.

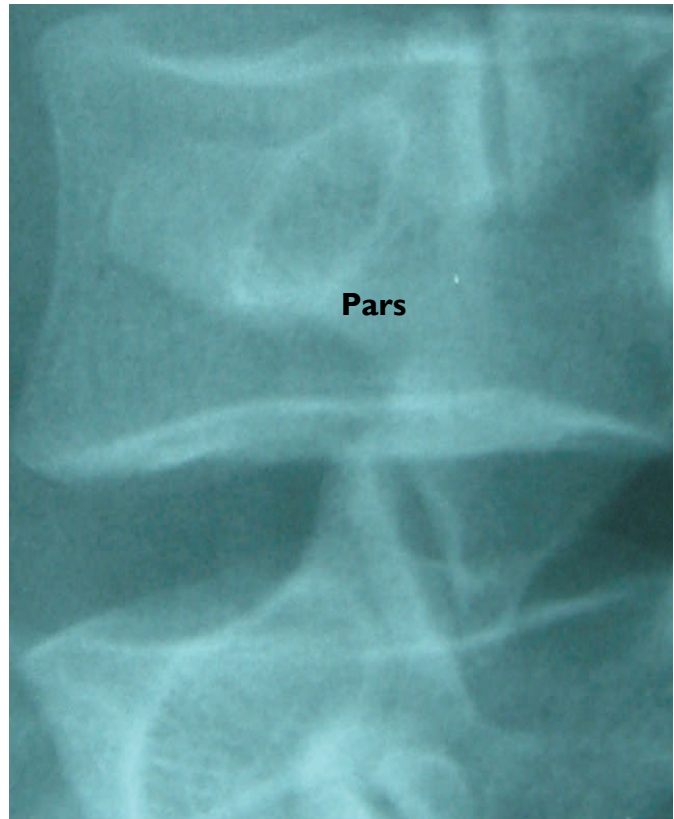


Fig 4.

OBLIQUE VIEWS—properly positioned (coned down) oblique view showing the pars region optimally. 2 views required to present both pars.

REFERENCES:

1. [http:// mydlevelandclinic. Org/disorders/back/hic...spondylolisthesis](http://mydlevelandclinic.Org/disorders/back/hic...spondylolisthesis)

RADIOLOGY BLOOPERS

When you need a laugh ... heard in offices!

“A month ago, he knocked off his olecranon.”

“Patient is to come back in 10 days with heating pad.”

“She says her shoulder bothers her a lot a night, but it is not present now.”

“Because of morbid obesity, the patient was unable to be “weighted” here in the office.”

“She is married to a significantly older young male.”

“I would like her to see a heart specialist for this wrist ganglion.”

“She returns with foot pain, but is still wearing high-helled shoes.”

THE DIGITAL CORNER

S-values — digital radiology.

What does an S-value represent and how is it monitored?

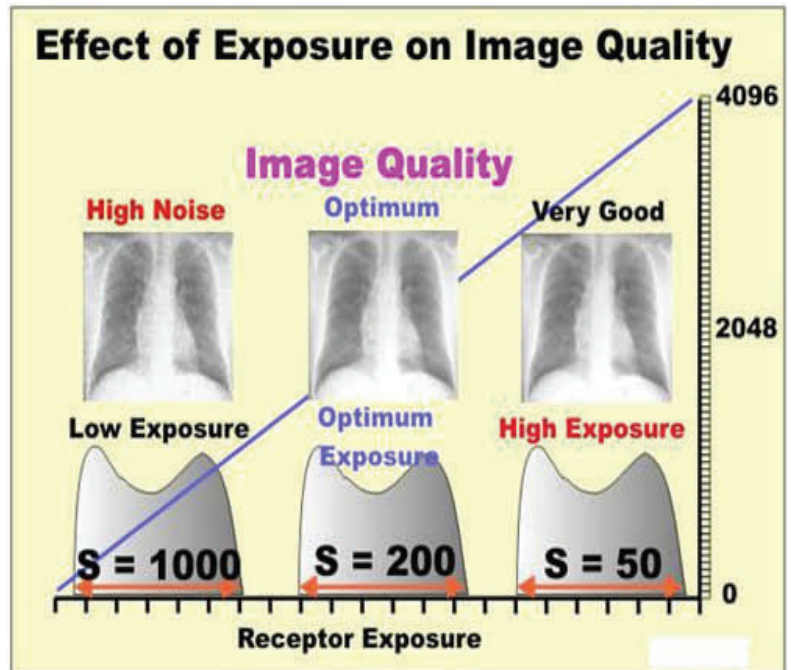
S-values or “sensitivity” values represent the numeric value of exposure received by the receptors in the digital system.

This represents a key value in monitoring that a quality radiograph is obtained with the least amount of dose to the patient.

This is automatically being recorded by the software for every exposure taken on a particular digital system.

The illustration on the right (Sprawls) shows that an optimal CXR in this office has an S-value of 200.

Your X-ray service company versed in digital technology can ensure that YOUR exposures fall with acceptable ranges.



RECERTIFICATION PROGRAMS — 2011

While prior approval of all programs is required, it is impossible for us to maintain all dates, places and faculty of all program presentations.

It is suggested that you contact your state chiropractic association or nearest chiropractic college for information on programs available in your area.

Applications for program approval are being received on nearly daily basis.

All dates of presentations are subject to change:

FLORIDA CHIROPRACTIC ASSOCIATION

Contact: FCA

Phone: 407 . 290 . 5883

www.fcachiro.org

NCCA

X-ray Recertification (6 hours) Dec. 2011

Charlotte, NC

Contact: Heather Wrenn, Education Director

Phone 919 . 832 . 0611

www.ncchiropractic.com

ACRRT

EXECUTIVE HEADQUARTERS

52 W. COLFAX STREET

PALATINE, ILLINOIS 60067-5048

PHONE/FAX: 847 . 705 . 1178

www.ACRRT.COM



You will need to send a check for

Membership Dues

and continuing education certificate prior to

December 31, 2011.

Go to www.acrrt.com for further information.

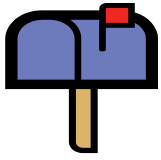
Self instructed Readings (SIRs) - Available now for those needing six (6) hours of continuing education.

These are articles that you have 30 days to read, answer corresponding questions and return to our office for credit.

SIRs are available for \$21.00 per hour or \$126.00 for the required six (6) hours.

Please contact our office: 847 . 705 . 1178 to order.

ACRRT



ACRRT
52 West Colfax
Palatine, IL. 60067



TO:

EXECUTVE DIRECTOR'S MESSAGE...

Thank you for providing us with email addresses. ACRRT continues to update our records and our software programs to streamline our processes. We have added the ability to provide CE's to other CT's, email SIR's, send out dues notices, and allow quicker turn around on test scores.

Please, keep us updated when you change your phone numbers, addresses AND email addresses so that we may be able to keep in touch with you.

Remember to check with the ACRRT BEFORE you take any course for CE hours. The course content has to be relevant to the CT job profile and offered by an approved agency. Taking classes that cover other subject matter will not be approved.

Feel free to contact us with any questions, comments, or suggestions.

- Dr. L. Puzik